

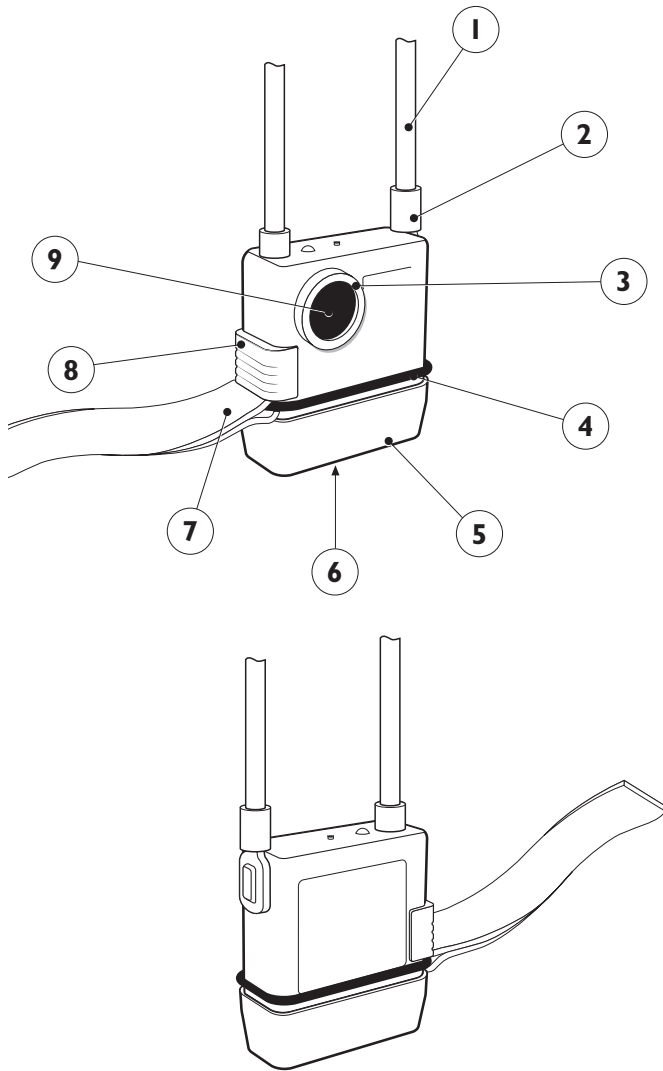
Parts and Assembly PLB8-LR 'SOS'

Product Description	Product Code
① Clear PVC 5mm dia tube @ 1 meter	PLB80005
② High bright antenna cable assembly complete with crimp	PLB80027A
③ Black PVC bung stop for end of clear PVC tube	PLB80022
④ Antenna end lug which is attached to the antenna shroud	PLB80021
⑤ Waterpin assembly @ 80mm long	PLB80009
⑥ Round non detach rubber activation button	PLB80003
⑦ Plastic body YELLOW non detach	PLB80002-LR
⑧ Red UV stable rubber 'ring'/ready switch restrainer with lifting tag attached	PLB80044
⑨ Wedge seal for PLB body	PLB80007
⑩ Battery 9 volt lithium	PLB80041
⑪ Rectangular seal for bottom basecap 'wide'	PLB80037
⑫ Foam 10mm x 10mm pad battery buffer for fitting into basecap and unit	PLB80038
⑬ Basecap BLACK	PLB80036
⑭ Basecap screw seal @ 6mm x 2mm	PLB80039
⑮ Basecap stainless screw	PLB80040
⑯ Brass insert non detach	PLB80019
⑰ PCB insert YELLOW cover non detach	PLB80018
⑱ PCB board 121.5MHz with LED	PLB80032A
⑲ Side switch BLACK	PLB80024
⑳ Magnet for side ready switch	PLB80025
㉑ Waterpin assembly @ 65mm long	PLB80010
㉒ Clear domed lens	PLB80004
㉓ Parts 20 & 21	PLB80023A
㉔ Parts 17 & 18	PLB80017A
㉕ Parts 5, 6, 7, 9 & 23	PLB80001A-LR

Parts and Assembly ISPLB8X

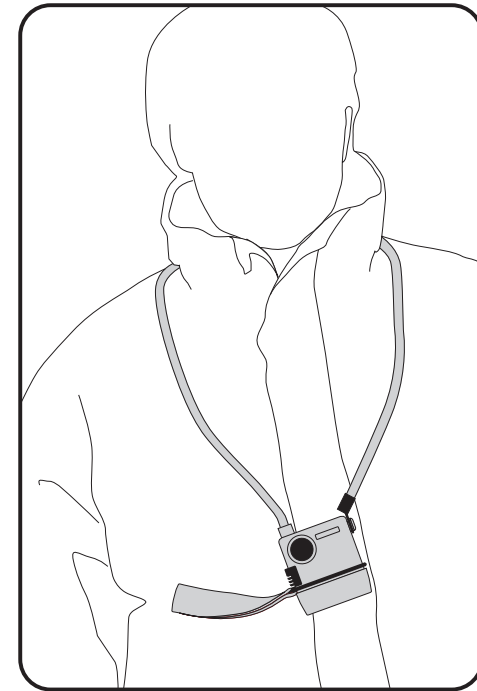
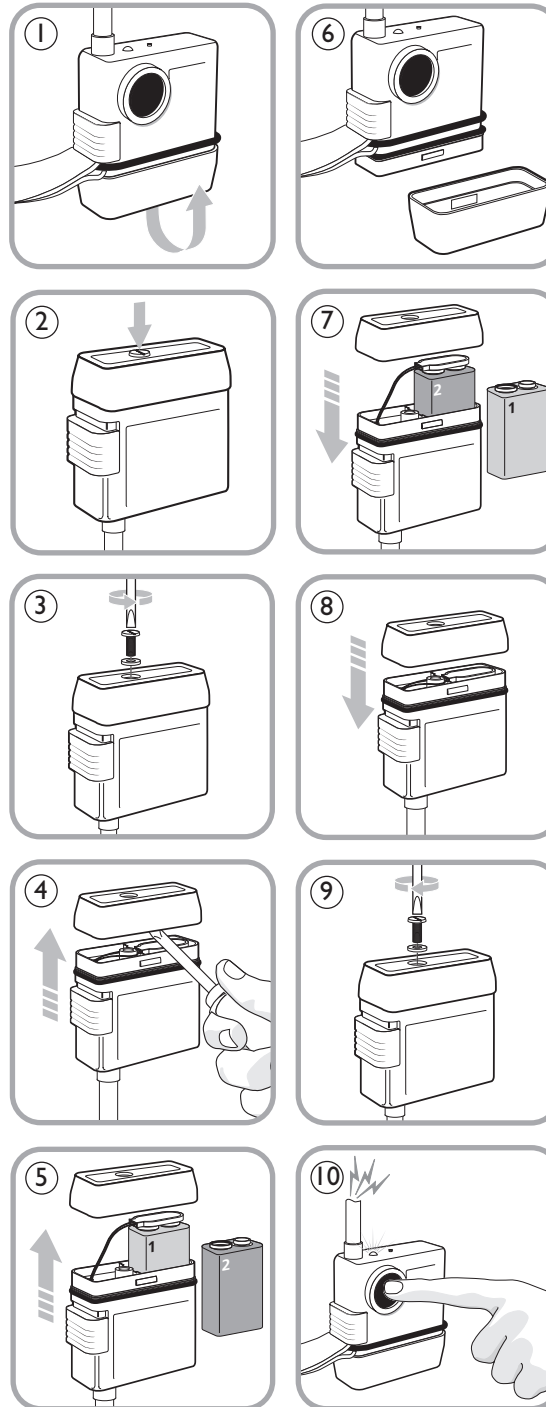
Product Description	Product Code
① Clear PVC 5mm dia tube @ 1 meter	PLB80005
② Antenna cable BLACK assembly complete with crimp	PLB80027A-IS
③ Black PVC bung stop for end of clear PVC tube	PLB80022
④ Antenna end lug which is attached to the antenna shroud	PLB80021
⑤ Waterpin assembly @ 80mm long	PLB80009
⑥ Round non detach rubber activation button	PLB80003
⑦ Plastic body ORANGE non detach	PLB80002-IS
⑧ Red UV stable rubber 'ring'/ready switch restrainer with lifting tag attached	PLB80044
⑨ Wedge seal for PLB body	PLB80007
⑩ Battery 9 volt lithium	PLB80041
⑪ Rectangular seal for bottom basecap 'wide'	PLB80037
⑫ Foam 10mm x 10mm pad battery buffer for fitting into basecap and unit	PLB80038
⑬ Basecap ORANGE	PLB80036-IS
⑭ Basecap screw seal @ 6mm x 2mm	PLB80039
⑮ Basecap stainless screw	PLB80040
⑯ Brass insert non detach	PLB80019
⑰ PCB insert ORANGE cover non detach	PLB80018-IS
⑱ PCB board 121.5MHz	PLB80034
⑲ Side switch ORANGE	PLB80024-IS
⑳ Magnet for side ready switch	PLB80025
㉑ Waterpin assembly @ 65mm long	PLB80010
㉒ Clear domed lens	PLB80004
㉓ Parts 20 & 21	PLB80023A-IS
㉔ Parts 17 & 18	PLB80017A-IS
㉕ Parts 5, 6, 7, 9 & 23	PLB80001A-IS

Alerting Unit features



1. Antenna
2. Antenna rubber end lug
3. Manual activation button guard
4. Arm-switch restrainer
5. Base cap
6. Base cap screw
7. Arm-switch restrainer tag
8. Side arming/ready sliding switch
9. Manual activation button

Changing a battery



User Maintenance Guide for Man Overboard Alerting Unit

MODELS:
PLB8-LR'SOS'
ISPLB8X

MARINE RESCUE TECHNOLOGIES LTD
35 North Bar Within, Beverley, East Yorkshire
HU17 8DB, United Kingdom
tel: +44(0)1482 475850
fax: +44(0)1482 475855
sales enquiries: sales@seamarshall.com
general enquiries: sos@seamarshall.com

Visit our website for product information or call/email our sales team to order spares and accessories.

www.seamarshall.com