

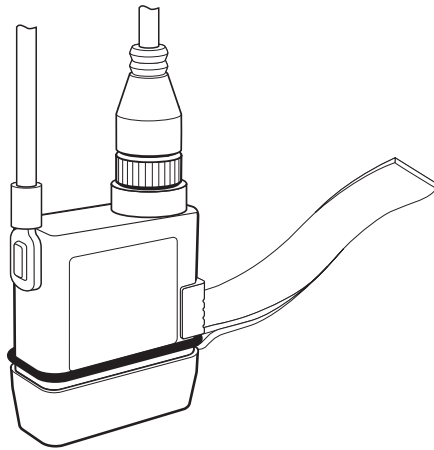
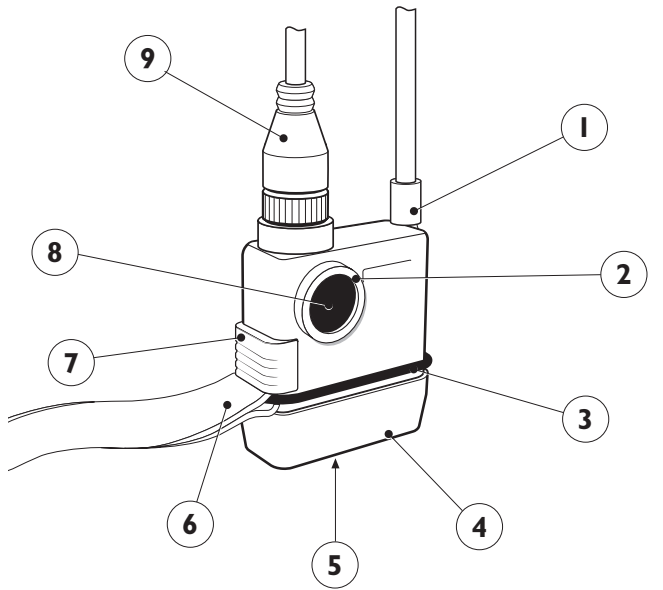
Parts and Assembly PLB8-LR SOS Detach

Product Description	Product Code
① Antenna end lug which is attached to the antenna shroud	PLB80021-DET
② Round non detach rubber activation button	PLB80003-DET
③ Plastic body YELLOW detach	PLB80002-LR-DET
④ Red UV stable rubber 'ring'/ready switch restrainer with lifting tag attached	PLB80044
⑤ Wedge seal for PLB body	PLB80007
⑥ Battery 9 volt lithium	PLB80041
⑦ Rectangular seal for bottom basecap 'wide'	PLB80037
⑧ Foam 10mm x 10mm pad battery buffer for fitting into basecap and unit	PLB80038
⑨ Basecap BLACK	PLB80036-DET
⑩ Basecap screw seal @ 6mm x 2mm	PLB80039
⑪ Basecap stainless screw	PLB80040
⑫ PCB insert YELLOW cover detach	PLB80018-DET
⑬ Brass insert non detach	PLB80019-DET
⑭ PCB board 121.5MHz without LED	PLB80032A-DET
⑮ Antenna assembly connector - male	PLB80050-DET
⑯ Side switch BLACK	PLB80024
⑰ Magnet for side ready switch	PLB80025
⑱ Round detach YELLOW ring	PLB80004-DET
⑲ 1mm washer	PLB80049-DET
⑳ Antenna assembly connector - female	PLB80053-DET
㉑ LED PCB	PLB80052-DET

Parts and Assembly ISPLB8X - Detach

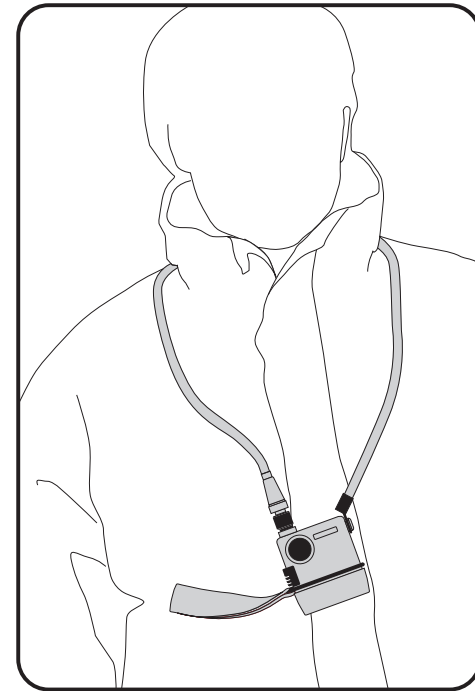
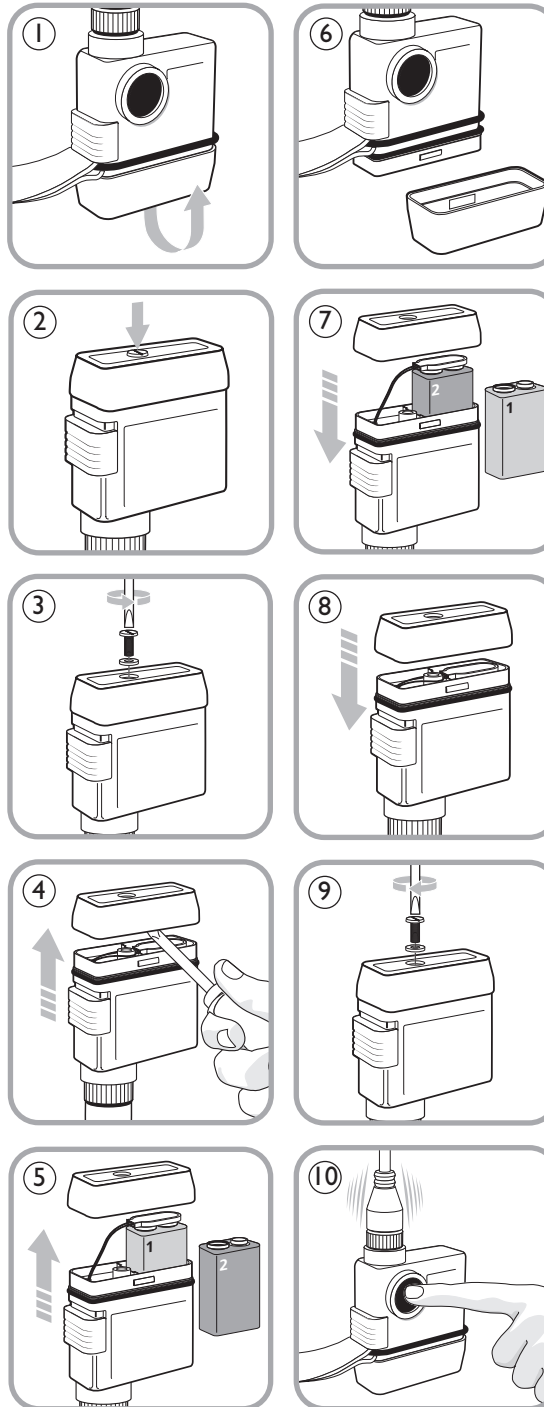
Product Description	Product Code
① Antenna end lug which is attached to the antenna shroud	PLB80021-DET
② Round non detach rubber activation button	PLB80003-DET
③ Plastic body ORANGE detach	PLB80002-IS-DET
④ Red UV stable rubber 'ring'/ready switch restrainer with lifting tag attached	PLB80044
⑤ Wedge seal for PLB body	PLB80007
⑥ Battery 9 volt lithium	PLB80041
⑦ Rectangular seal for bottom basecap 'wide'	PLB80037
⑧ Foam 10mm x 10mm pad battery buffer for fitting into basecap and unit	PLB80038
⑨ Basecap ORANGE	PLB80036-IS
⑩ Basecap screw seal @ 6mm x 2mm	PLB80039
⑪ Basecap stainless screw	PLB80040
⑫ PCB insert ORANGE cover detach	PLB80018-DET
⑬ Brass insert non detach	PLB80019-DET
⑭ PCB board 121.5MHz without LED	PLB80032A-DET
⑮ Antenna assembly connector - male	PLB80050-DET
⑯ Side switch ORANGE	PLB80024-IS
⑰ Magnet for side ready switch	PLB80025
⑱ Round detach ORANGE ring	PLB80004-IS-DET
⑲ 1mm washer	PLB80049-DET
⑳ Antenna assembly connector - female	PLB80053-DET
㉑ LED PCB	PLB80052-DET

Alerting Unit features



1. Antenna rubber end lug
2. Manual activation button guard
3. Arm-switch restrainer
4. Base cap
5. Base cap screw
6. Arm-switch restrainer tag
7. Side arming/ready sliding switch
8. Manual activation button
9. Detachable Antenna

Changing a battery



User Maintenance Guide for Man Overboard Alerting Unit

MODELS:
PLB8-LR'SOS' Detach
ISPLB8X Detach

MARINE RESCUE TECHNOLOGIES LTD
 35 North Bar Within, Beverley, East Yorkshire
 HU17 8DB, United Kingdom
 tel: +44(0)1482 475850
 fax: +44(0)1482 475855
 sales enquiries: sales@seamarshall.com
 general enquiries: sos@seamarshall.com

Visit our website for product information or call/email our sales team to order spares and accessories.

www.seamarshall.com